

GM9907-LB

Batching Scale Controller



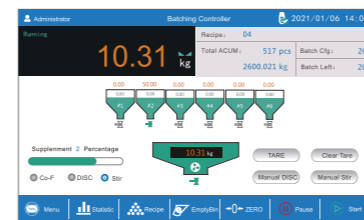
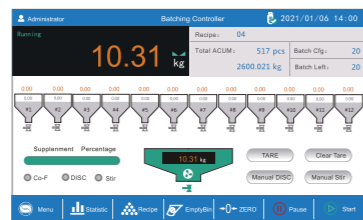
GM9907-LB is designed for batching scale that can sort feeding orders of a variety of materials. It can be widely used in concrete mixing, bituminous mixing, metallurgy, chemical, feeds industries etc.



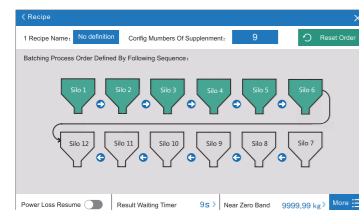
Version Features

User-Friendly · Better Experience

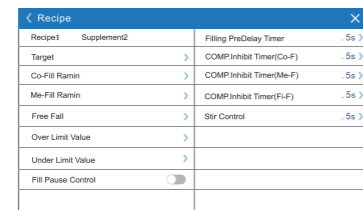
- Memory card build in, Dynamic batching process can be graphically displayed for better understanding and monitoring.



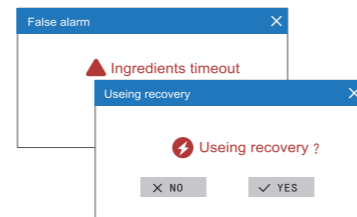
- Support the batching of 12 kinds of materials. It can be customized according to the batching process sequence, which is flexible to use;



- The working process is clear. Feeding value and time of the material can be set, and real-time feeding dynamic can be displayed;

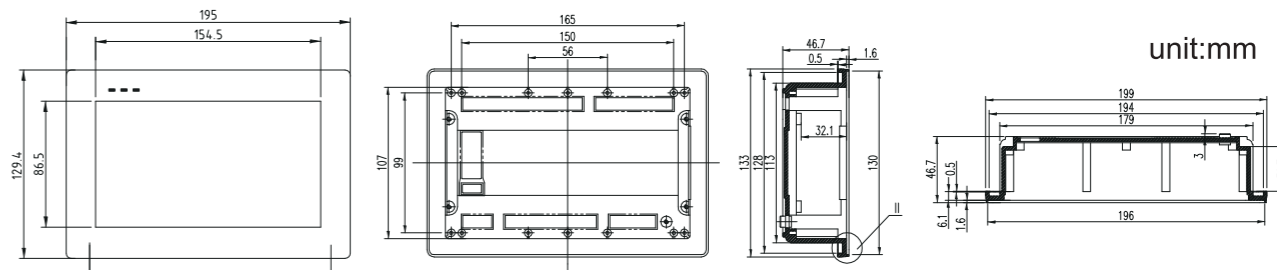


- User-friendly design: Save function when power down and monitoring alarm function;



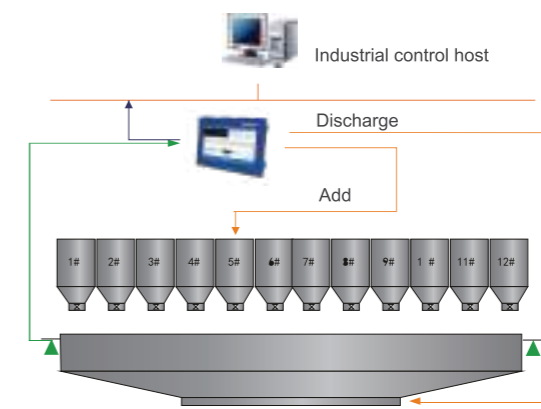
Specifications

General Specifications	Model	GM9907-LB
	Power Supply	DC24V
	Operating Temperature	-10~40°C
	Maximum Humidity	90%R.H without dew
	Test Standard	ClassIII 6000 e, 1 μV/e
	Power Consume	About 15W
Weighing Parameters	A/D Converter type	24 bit Sigma-Delta
	A/D Conversion Rate	120/240/480/960 times /sec
	Non-Linear	0.01%F.S
	Gain Drifting	10PPM/°C
	Minimum Sensitivity	0.02μV/d
	Analog Input Range	0.02~15mV
	Display Accuracy	1/100,000
	Power Source for Load Cell	DC5V 125mA(MAX)
	Input Resistance	10MΩ
	Zero Point Adjustment Range	0.002~15mV(load cell 3mV/V)
I/O Interfaces and Communications	12 Input 16 Output, I/O Selectable	
	12 Input, Active-low	Start, Emergency stop, Stop, Pause, ZERO, Clear alarm, Change recipe, M-DISC permission, TARE, Clear tare, Manual stir, etc.
	16 Output, Single drive current 500mA	Run, Stopped, Coarse flow, Medium flow, Fine flow, Result waiting, Over/under, DISC, -NZ-, Alarm, Stir, etc.



*Specification and dimension may be upgraded, please consult sales manager for the latest info.

Application



Batching, up to 12 materials

Communication

RS485+RS232

- For connecting PC, PLC, Printer, Label Printer, Remote Display, Code Printer, or other external devices, for reading and setup remotely;

USB

- For importing and exporting recipes, works, I/O function communication and other parameters, upgrading system software, customizing boot screen, etc;

12 Input/16 Output

- For starting, stopping, feeding, unloading, clamping/loosening bags, etc;

Modbus TCP

- For connecting PC, PLC, Printers, etc., for reading remotely.