

GML-X8 S Series系列

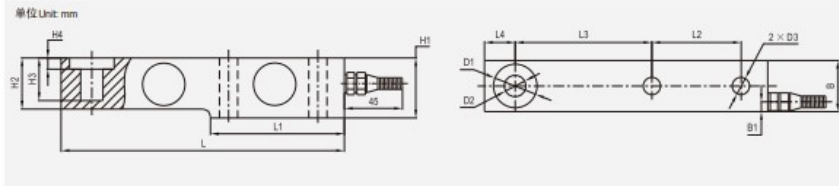


悬臂梁称重传感器(可选数字版)

Shear Beam Load Cell (Digital Version Available)

结构紧凑, 安装高度低;
有过载保护与支撑杆, 采取摆支撑有自复位功能;
模拟及数字版本可选。

Compact installation at minimum installation height;
With overload stop and stay rod,
Self-restoring due to pendulum bearing;
Analog or digital version selection.



Cap(unit)t	L	L1	L2	L3	L4	H1	H2/B	B1	H3	H4	D1	D2	D3
0.5,1,2,3	203	95	64	98	22	43	36.6	7	30.5	8	ø32	ø16	ø13
5,7,5,8	235	110	66	124	22	52	48	7	30	12	ø38	ø22	ø21
10,15	279	133	82	140	32	67	60	8.5	20	8.5	ø48	ø32	ø28
20,25	318	153	89	159	38	82.5	70	9.5	24	9.5	ø54	ø38	ø34

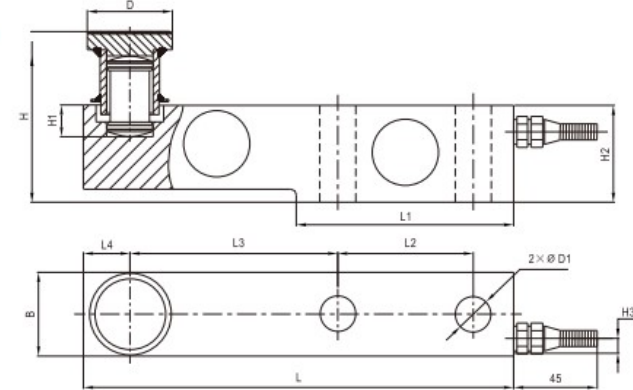
地上衡、配料秤、料斗秤、
平台秤
Floor scale, blending scale,
hopper scale, platform scale

Specifications 技术说明 Exc+(Red,红); Exc-(Black,黑); Sig+(Green,绿); Sig-(White,白); Sen+(Blue,蓝); Sen-(Yellow,黄)

Item 项目	Unit 单位	Parameter 参数
Accuracy class 精度等级		C3
Maximum capacity(Emax) 额定载荷	t	0.5 / 1 / 2 / 3 / 5 / 7.5 / 8 / 10 / 15 / 20 / 25
Minimum LC verification interval(Vmin) 最小检定分度值	% of Emax	0.0100
Sensitivity(Cn)/Zero balance 灵敏度/零点平衡	mV/V	2.0±0.002/0±0.02
Temperature effect on zero balance (TK0) 温度对零点影响	% of Cn/10K	±0.0170
Temperature effect on sensitivity (TKc) 温度对灵敏度影响	% of Cn/10K	±0.0170
Hysteresis error(dhy) 滞后误差	% of Cn	±0.0180
Non-linearity(dlin) 非线性误差	% of Cn	±0.0167
Creep(dcr) over 30 min. 蠕变及蠕变恢复	% of Cn	±0.0167
Input (RLC) & Output resistance (RO) 输入&输出电阻	Ω	400±10 & 352±3
Nominal range of excitation voltage (Bu) 额定电压	V	5-12
Insulation resistance(Ris) at 50Vdc 绝缘电阻	MΩ	>5000
Service temperature range(Btu) 工作温度	°C	-30~70
Safe load limit(EL) & Break load(Ed) 破坏载荷&安全承载	% of Emax	150 & 300(0.5t-5t);120&200(8t-25t)
Protection class according to EN60529 (IEC 529) 保护等级		500kg:IP67;1t-25t:IP68
Material 材料		合金钢和不锈钢可选 Option: Alloy steel,Stainless steel
Maximum capacity(Emax) 额定载荷	t	0.5,1,2 3 5 7.5/8 10 15 20 25
Deflection at Emax(Sno),approx. 最大荷下的变形量	mm	<1 <1.2 <1.5 <1.2 <1.5
Weight (G), approx 重量	kg	2.2 4.2 8.0 11.5
Cable 电缆: Diameter 直径: ø6mm Length 长度	m	2.6 3.5 5.2 7 12 12

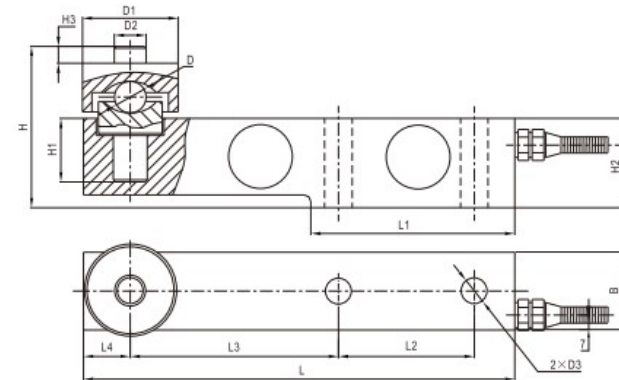
GML-X8 S Series Assembly Drawing系列总装图

总装图 A
Assembly Drawing A



Cap(unit)t	L	L1	L2	L3	L4	B	H	H1	H2	H3	D	D1
0.5,1,2,3	203	95	64	98	22	36.6	58	30.5	43	7	ø35	ø13
5,7,5,8	235	110	66	124	22	48	81	30	52	7	ø42	ø21
10,15	279	133	82	140	32	60	128	20	67	8.5	ø57	ø28
20,25	318	153	89	159	38	70	144	24	82.5	9.5	ø70	ø34

总装图 B
Assembly Drawing B



Cap(unit)t	L	L1	L2	L3	L4	B	H	H1	H2	H3	D	D1	D2	D3
0.5,1,2,3	203	95	64	98	22	36.6	79	30.5	43	9	ø16	ø45	ø15	ø13
5,7,5,8	235	110	66	124	22	48	104	30	52	10	ø25	ø52	ø21	ø21