

GML-Z4 A Series系列



柱式传感器 (可选数字版)

Canister Load Cells (Digital Version Available)

激光焊接IP68;
自复位功能;
经过角差预调整适合并联使用(按EN 45501);
模拟及数字版本可选。

Laser welded, IP68;
Self-restoring function;
Optimized for parallel connection by corner pre-adjustment,
Meets EMC/ESD requirements according to EN 45 501;
Analog or digital version selection.



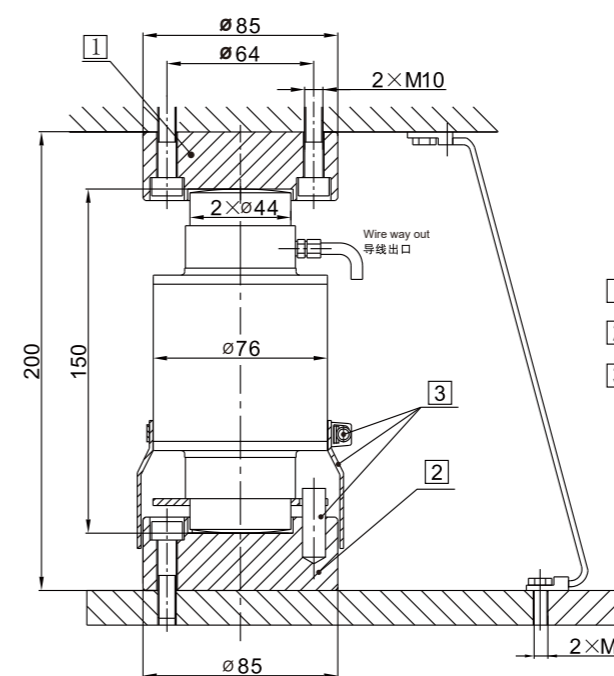
汽车衡、轨道衡、轴量秤、地上衡
Truck scale, railway scale, axle wheel scale, floor scale

Specifications 技术说明 Exc+ (Red,红); Exc-(Black,黑); Sig+(Green,绿); Sig-(White,白); Sen+(Blue,蓝); Sen-(Yellow,黄)

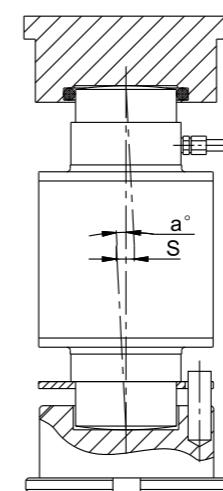
| Item 项目 | Unit 单位 | Parameter 参数 |
|---|-------------|---|
| Accuracy class 精度等级 | | C3 |
| Maximum capacity(Emax) 额定载荷 | t | 10 / 15 / 20 / 30 / 40 / 50 |
| Minimum LC verification interval(Vmin) 最小检定分度值 | % of Emax | 0.0100 |
| Sensitivity(Cn)/Zero balance 灵敏度/零点平衡 | mV/V | 2.0±0.002/0±0.02 |
| Temperature effect on zero balance (TK0) 温度对零点影响 | % of Cn/10K | ±0.0170 |
| Temperature effect on sensitivity (TKc) 温度对灵敏度影响 | % of Cn/10K | ±0.0170 |
| Hysteresis error(dhy) 滞后误差 | %of Cn | ±0.0180 |
| Non-linearity(dlin) 非线性误差 | %of Cn | ±0.0167 |
| Creep(dcr) over 30 min. 蠕变及蠕变恢复 | % of Cn | ±0.0167 |
| Input (RLc) & Output resistance (R0) 输入&输出电阻 | Ω | 700±20 & 703±3.5 |
| Nominal range of excitation voltage (Bu) 额定电压 | V | 5~12 |
| Insulation resistance(Ris) at 50Vdc 绝缘电阻 | MΩ | >5000 |
| Service temperature range(Btu) 工作温度 | °C | -30~70 |
| Safe load limit(EL) & Break load(Ed) 破坏载荷&安全承载 | % of Emax | 150 & 250 |
| Protection class according to EN60529 (IEC 529) 保护等级 | | IP68 |
| Material 材料 | | 合金钢和不锈钢可选 Option: Alloy steel, Stainless steel. |
| Maximum capacity(Emax) 额定载荷 | t | 10 15 20 30 40 50 |
| Min. scale verification (emin) according to En45501 [...#=#max. Number of load cells] 秤的最小检定分度值 | kg | 5 5 [6#] 10 [6#] 20 [8#] 20 [8#] [10#] |
| Recommended maximum weighing capacity of scale 推荐秤的额定载荷 | t | 20 30 50 80 100 120 150 200 |
| Deflection at Emax(Sno), approx. 最大荷下的变形量 | mm | 0.55 0.55 0.65 0.75 0.85 0.85 |
| Weight(G), approx 重量 | kg | 2.8 3.2 3.2 3.6 3.6 3.8 |
| Cable 电缆: Diameter 直径 Φ5mm Length 长度 | m | 10 12 12 14 16 16 |

Mounting variation: 安装方式:
for (10~50)t

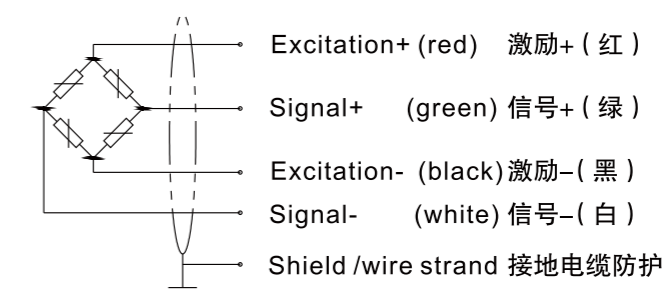
单位 Unit: mm



- ① GML-Z4 A/ZOU B1
- ② GML-Z4 A/ZOU2 B2
- ③ Dowel pin Φ10×30(rotation stop), flexible tube and tube clip enclosed in the packing of the load cell
防旋转插销, 伸缩管与管夹在传感器包装中



Wiring code (4-wire circuit)
电缆芯线色标 (四线制)



| Cap | unit t | 10 | 15 | 20 | 25 | 30 | 40 | 50 |
|--|----------|------|------|------|------|------|------|------|
| R ball 球头半径 | mm | 130 | 130 | 160 | 160 | 160 | 180 | 180 |
| amax 最大允许倾斜角度 | " ° " 度 | 4.8 | 4.8 | 4.8 | 4.8 | 4.8 | 4.8 | 4.5 |
| Smax 最大允许侧向偏移 | mm | 12 | 12 | 12 | 12 | 12 | 12 | 10.5 |
| FR(%of applied load) 回复力 (施力大小的百分比) | at Smax | 6.3 | 6.3 | 9.8 | 9.8 | 9.8 | 12 | 12 |
| | at S=1mm | 0.48 | 0.48 | 0.75 | 0.75 | 0.75 | 0.93 | 0.93 |